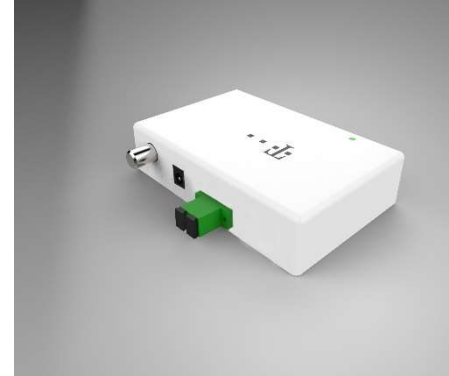


MFN-WF FTTH Optical Receiver with GPON&XGSPON Bypass Filter

Product Overview

MFN-WF Series Home Optical Receiver is designed by DCT DELTA for FTTH application of CATV network. It is small and can provide stable output electrical level and excellent performance at as high as 1000MHz bandwidth. It has very high optical power operation range and Auto Gain Control (AGC) for stable output. AGC function can keep stable output under -8dBm to +2dBm output. The build-in WDM(bypass filter) can loop out signal to GPON/XGSPON/EPON/10GEPON ONTs for PON RF overlay solution.



Feature

- Build-in WDM (bypass filter) for GPON/XGSPON/EPON/10GEPON ONTs for PON RF overlay solution;
- Output ability of 1000MHz can be 74~78dBuV
- Complete surge suppression circuit, anti-lightning strike and surge shock prevention ability
- Stable and reliable AGC control function
- Power and optical power LED display monitoring
- Low consumption design, total consumption smaller than 2.0W

Parameter

Optical Parameter	Unit	MFN-WF
Pass Optical Wavelength	nm	1550
Reflection Optical Wavelength	nm	1270/1310 or 1490/1577
Pass Channel IL	dB	≤0.8
Reflection Channel IL	dB	≤0.8
Pass Channel Isolation	dB	≥35
Reflection Channel Isolation	dB	≥35
Receiving Optical Power	dBm	+2 ~ -16
Optical Reflection Loss	dB	≥45
LED Optical Monitoring Display	dBm	≥ +2, red light alarms < +2 & > -8, green light instructs ≤ -8, yellow light instructs
LED Power Monitoring Display	-	Power on, green light instructs
Connector	-	SC/APC
RF Parameter	Unit	MFN-WF

Frequency Range	MHz	258 ~ 1006
Output RF Impedence	Ohms	75
Flatness	dB	+/-1.25
Output Reflection Loss	dB	≤-18
Nominal Output Electrical Level	dBuV	Typical value 76@-8dBm
AGC Control Accuracy	dB	AH2: +/-2@-8dBm ~ +2dBm
Performance		
MER	dB	≥ 36@-8dBm
BER		≤10 ⁻⁹
Power Supply		
External Switch Power	-	Input: 100 ~ 240VAC 50 – 60Hz Output: 5VDC 0.5A
Consumption	W	≤1.5 W
Others		
Operation Temperature	℃	-20 ~ +60
Operation Humidity	-	20% ~ 90%, No Condensation
Mechanical Dimension	mm	118.6*78.6*29

Note: Testing condition of link index: 1550 transmitter, 93 DVB-C 256 QAM channels loading.

Order Information